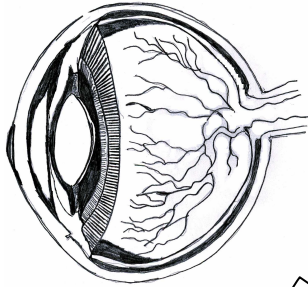


Health (5-6) Teacher

Eyesight

(Read the article and answer the questions)



Sled Dog's Eye

Humans have much better sight than dogs when it comes to small objects, yet dogs, because of the location of their eyes can detect a movement behind them. This is because a dog's eyes are flatter than humans'. Their eyes are more sensitive to light and motion than humans' eyes.

They, also, have excellent night vision since they have a special membrane that allows them to receive light at night.

Dogs were thought to be color blind. New research suggests that dogs may actually see color, but not to the extent that humans do.

Dogs with long noses have a very wide field of excellent vision, while those with short noses have detailed sight much more like a human's.

Light enters the pupil of the eye. Notice how much larger your dog's pupils are than your own. After passing through the pupil, the light passes through the lens. Larger lenses have greater light gathering ability and are usually found in animals active in dim light. Dogs have lenses that are much larger than human lenses. The cornea, acts like a strong lens as well. Larger corneas are usually found in animals with good night vision. Notice how much larger your dog's corneas are than yours.

A lens gathers light and bends light rays as they pass through it. In the eye, fine-tuning is achieved by changing the curvature of the lens, a process known as accommodation.

In a camera, light forms a sharp image on the film surface. In the eye, it is the retina, located at the rear of the globe that forms the image.

You can estimate your dog's field of view by holding a tidbit directly in front of him so that it attracts his attention, and then quietly and slowly moving an object from behind your dog forward around the side of his head, making note of the point at which it is first noticed.

Dogs can move their eyes in one direction people can not, backwards! They have a muscle that humans do not, the retractor bulbi, which enables them to retract their eyes back into their sockets.

True or False

(Place a T for True in the blank or an F for False in the blank)

- | | |
|---|------------------------------|
| 1. Dogs can move their eyes backwards. | <u> T </u> |
| 2. Dogs can see better in the dark than humans. | <u> T </u> |
| 3. The retractor bulbi is a light used by the doctor. | <u> F </u> |
| 4. The retina is located at the front of the eye. | <u> F </u> |
| 5. A dog's pupil is larger than a human's. | <u> T </u> |
| 6. A human's eye is flatter than a dog's eye. | <u> F </u> |
| 7. Light enters the eye through the retina. | <u> F </u> |
| 8. A lens bends light rays. | <u> T </u> |
| 9. New research finds that dogs may see color. | <u> T </u> |
| 10. Human eyes are more sensitive to motion than a dog's. | <u> F </u> |

History (5-6) Teacher

Alaska Time Line

The purpose of this worksheet is to place Alaska settlement in the framework of world events. The blue squares are the blank squares on the students' work sheet. The focus of this page is to make history in the world, America and Alaska relative to the student in time. This could be expanded upon by adding dates of the students' family, town and state. The secondary purpose of this worksheet is to help the student grasp how the homesteaders in Alaska were still struggling with nature, war and statehood long after the rest of the world.

(The student is supposed to fill the Alaska Time Line)

<u>Alaska</u>		<u>United States</u>
<u>Bering Expedition</u>	<u>1741</u>	
<u>Cook Expedition</u>	<u>1776</u>	<u>Declaration of Independence signed</u>
<u>Russian Settlement</u>	<u>1784</u>	<u>American Revolution Ends</u>
	<u>1823</u>	<u>Monroe Doctrine</u>
	<u>1844</u>	<u>The Telegraph is invented</u>
<u>Oil Discovered</u>	<u>1853</u>	
<u>Gold Discovered</u>	<u>1861</u>	<u>The American Civil War</u>
	<u>1865</u>	<u>Lincoln is assassinated</u>
<u>First Alaska Newspaper</u>	<u>1868</u>	
<u>First Oil Production</u>	<u>1902</u>	
<u>First Telegraph Sent</u>	<u>1905</u>	
<u>Territory Legislature</u>	<u>1913</u>	
	<u>1914</u>	<u>World War I</u>
<u>Alaska's First University Opens</u>	<u>1922</u>	
<u>Alaska Flag</u>	<u>1927</u>	
	<u>1941</u>	<u>World War II</u>
<u>Japanese invade Alaska</u>	<u>1942</u>	
<u>Alaska Highway Opens</u>	<u>1948</u>	
<u>Alaska enters the Union of States</u>	<u>1959</u>	
	<u>1961</u>	<u>First Manned space flight</u>
<u>The Good Friday Earthquake</u>	<u>1964</u>	
<u>Trans Alaska Pipeline</u>	<u>1973</u>	



Word Hunt

How many words can you make from the following Alaska words?
 (Some words are provided. There are many more possibilities)

Float Plane	MT. McKinley	Iditarod	Brown Bear
oat	out	it	row
plan	yen	rod	now
lane	ton	do	bow
leap	tone	tar	ran
top	lent	dad	bran
flea	mine	odd	wear
fan	mimic	rid	ware
fat	in	road	brow
eat	count	rat	no
feat	kin	toad	near
tone	mint	tad	rear
tan	cent	did	worn
plate	tin	rot	warn
pea	ten	oat	born
lone	time	art	bean
flea	lime	at	ear